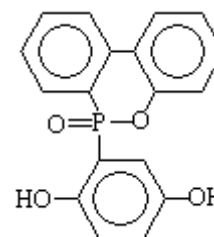


GC DOPO HQ

2-(6-Oxido-6H-dibenz[c,e][1,2]oxaphosphorin-6-yl)-1,4-benzenediol

Chemical Formula $C_{12}H_9O_2P$
CAS registry number 99208-50-1



GC DOPO HQ is a phosphorus based flame retardant used in several applications, as epoxy resins and engineering polymers. **GC DOPO HQ** is able to be used as a reactive flame retardant or as raw materials for synthesis.

PHYSICAL-CHEMICAL PROPERTIES

Appearance	White to off-white powder
Assay, %	99.0 min
Melting Point, °C	245
Ash, % (m/m)	0.1 max
Moisture, % (m/m)	0.5 max

HANDLING AND STORAGE: The processing and use of GC DOPO HQ requires adequate technical and professional knowledge. Please consult safety data sheet for further handling, storage and toxicity information. GC DOPO HQ has to be stored in tightly sealed original container in a cool and well-ventilated area, away from direct sunlight.

PACKAGING: Standard pack size of GC DOPO HQ is 25 Kg bag.

IMPORTANT NOTE Some plastic additives, fillers or pigments can influence significantly on flame retardant properties. Before to use the products, please be informed. Stop machine with high temperature could create degradation of polymers. Please clean with neutral polymers.

DISCLAIMER:

Information contained in this document is provided to the best of our knowledge and is considered true as per revision date. We do not accept any liability for loss and damage that may occur from the improperly use of this information and for the use against the safety legal requirements and patent rights. This specification does not release the customer from the obligation to check the product as to its suitability for intended area of usage.